



www.arsglobal.net

ARS GLOBAL Pvt. Ltd.

Committed to Design, Quality & Delivery

LEADING
FOOTWEAR COMPONENTS
SUPPLIER



ARS GLOBAL Pvt. Ltd.

Committed to Design, Quality & Delivery



www.shroffgroup.net/ars

ABOUT US

ARS Global Pvt. Ltd., a part of the reputed Shroff Group, based in Agra, India. Established at the dusk of twentieth century in 1999 with over 20 years of experience, we're one of the largest distributors of footwear components in the country with state of art technology and infrastructure.

Being one of the pioneers in the organised distribution industry has always helped us in exclusively bringing well known international brands to our customers all across the country. We are known for lightening fast deliveries, abundant inventories ensuring a timely supply, fair price assurance and strict quality control thanks to a well equipped in-house testing lab.

Managing all this with large range of products is not an easy task but we have a large team of thorough professionals always on their feet to ensure the smooth supply to our customers.

We've all necessary certifications and have been regularly awarded for our performance by various govt. and business organisations.

MISSION & VISION

To look for every opportunity to serve the nation with best products using our visionary knowledge and innovation required for efficient utilisation of resources.

To provide committed after sales services using latest technologies to our customers.

To uphold Group's values of innovation, sustainability and quality, our large workforce of professionals and skilled workers is committed to work culture of customer satisfaction.



CELLULOSE INSOLE SHEETS

■ **Texon 2000** is the superior product of cellulose insole in **SATRA** Group. Texon 2000 is a natural fibre, elastomeric-bonded construction material with a sheet size of 1 mX1.5 m.

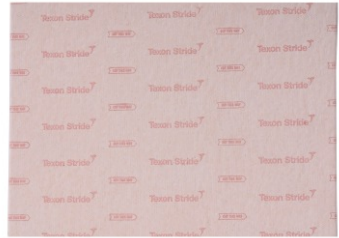
Standard Gauges: 1.00 mm, 1.25 mm, 1.50 mm, 1.75 mm, 2.00 mm.



■ **Texon Stride** is a cost-effective cellulose insole sheet, designed to provide a level of comfort for the wearer.

It is a natural fibre, elastomeric-bonded construction material with a sheet size of 1mX1.5m.

Standard Gauges: 1.00 mm, 1.25 mm, 1.50 mm, 1.75 mm, 2.00 mm.



CELLULOSE BOARD

BONTEX347FF

The product is designed as a high-quality footwear midsole, which has good rigidity and durable flexibility, and is suitable for boarding-last and three-in-one constructions. The product is treated with our unique Mori-Fresh® technology to resist the growth of bacteria, fungi and mold. "F" stands for product hardness/stiffness.

Standard Gauges: 1.00 mm, 1.25 mm, 1.50 mm, 1.75 mm, 2.00 mm.



BONTEX366IND

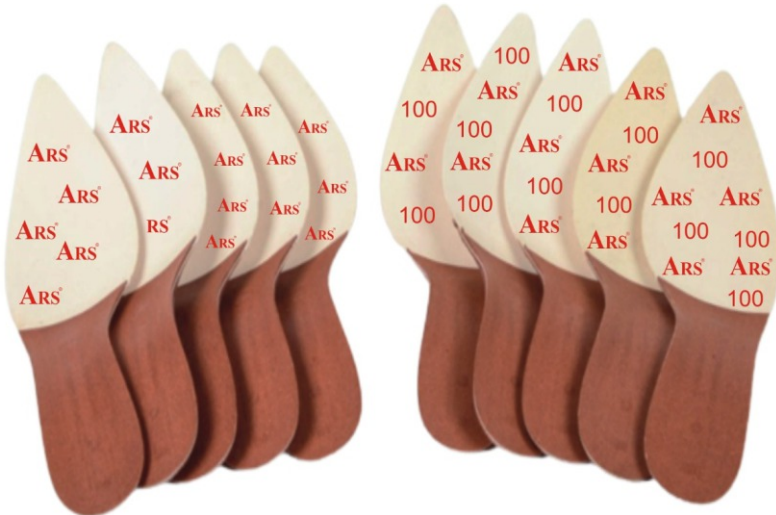
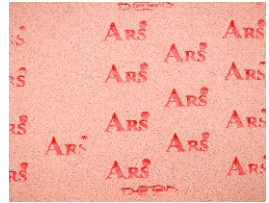
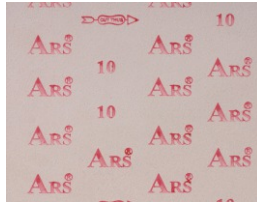
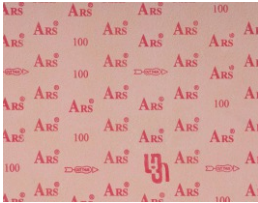
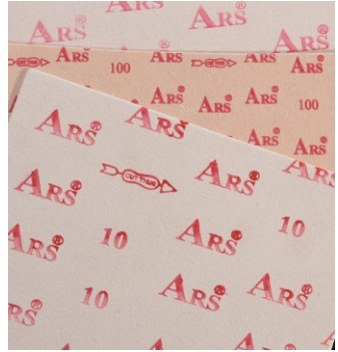
The product is designed as a mid-to-high-quality footwear midsole with high hardness, suitable for boarding-last and three-in-one constructions.

Standard Gauges: 1.00mm, 1.25mm, 1.50mm, 1.75mm, 2.00mm.

NON-WOVEN INSOLE SHEETS

ARS 100, ARS 10 & ARS Plus Grey Non-Woven Insole Sheets are made from recycled fibre made from plastic pet bottles. These are economically price effective and come in size of 1 mX1.5 m.

Standard Gauges: 1.25 mm, 1.50 mm, 1.75 mm, 2.00 mm.



PAPER BOARD INSOLE SHEETS

Topsing Paper Board is made from recycled paper waste and it's a low-price product available in sheet size of 1 m X 1.5 m.

Standard Gauges: 1.25 mm, 1.50 mm, 1.75 mm, 2.00 mm.



SHANK BOARDS

We have four ranges in this category:

Bartoli Duralite

Bartoli Red

Bartoli Blue

Bartoli BCR Brown

Available in size of 106 cm X 158 cm.

Standard Gauges:

Bartoli Duralite : 0.8 mm, 1.00 mm

Bartoli Red & Blue : 1.50 mm, 1.8 mm & 2.50 mm.

Bartoli BCR Brown : 2.50 mm & 3.0 mm



■ STROBLE SHEETS & STITCH BOND

- Recommended for all types of Strobel construction footwear including double lasted (Strobel/forepart lasting) – special grades for all types of safety footwear.

It is slightly softer, non-woven fabric comes in rolls and it is also excellent in tear resistance, colour fastness, ventilation, wear resistance and high temperature resistance.

Features/Benefits of Stroble Sheets:

- Provides Flexibility
- Acts as Cushion
- Light weight
- Non shrinkable or grows due to moisture
- Saves upper material

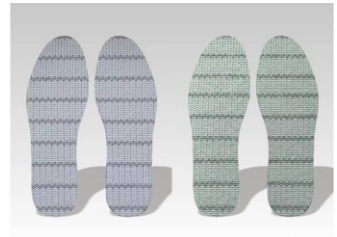
Standard Gauges:

STROBLE : 1.50 mm, 2.0 mm

STROBLE 250 GSM (1.0 mX1.5 m): 1.00 mm

STROBLE 300 GSM (1.0 mX1.5 m): 1.00 mm

SB (Stitch Bond): 1.50 mm, 2.0 mm

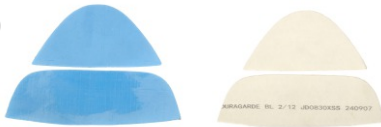


HEAT ACTIVATED TOE & COUNTER SHEETS

It's formally described as “heat-activated, self-adhesive scrim-reinforced polymer”. It is a stiff sheet of plastic with a reinforcing layer that you use with a heat gun to bend, mould and stick to itself. When it cools, it's tough, but still flexible, and is easy to finish and dye with standard techniques.



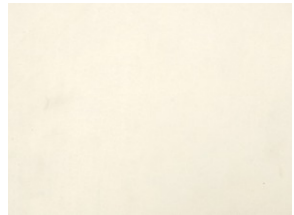
TEXON INDY (UK) DURAGARDE FORME B PLUS FORME AT2



Duragarde BL (Rigid Counter): BL is a counter material on felt with thermoplastic and adhesive on both sides and fits any kind of shoes.

Characteristics: Rigidity, shape retention, workability, resilience, high tensile strength.

Application: Boots, Military Shoes, Work Shoes, Hiking Shoes.



Duragarde F21 (Rigid Toe-Puff): It is an extruded toe puff material, stiff and elastic effect with good bounce and outstanding wear results.

Characteristics: Rigidity, shape retention, workability, reticence, excellent adaptability, highly moldable, recyclable, easy fit.

Application: Sneakers, Kid Shoes, High Heeled Shoes



Standard Gauges:

Duragarde BL : 0.5, 0.7, 0.8, 0.9 mm

Duragarde F21 : 0.5, 0.7, 0.8, 0.9 mm

FORME B PLUS (S/S) (1.0 m X 1.5 m): 0.9 mm, 1.0 mm

FORME B PLUS (D/S) (1.0 m X 1.5 m): 1.2 mm, 1.4 mm, 1.6 mm, 1.8 mm

PING PONG (1 m X 1.5 m): 0.4 mm, 0.6 mm, 0.8 mm



**SOLVENT ACTIVATED
TOE PUFF & COUNTER SHEETS**



The function of a Toe Puff & Counter is to add structure to the toe & counter of a shoe. There are all sorts of different materials with various properties that can be used for toe puffs & counters. Toe Puff Sheets range includes:

Solvent Activated Tecno Blue Solvent Dip is economical sheet, made from non-woven recycled fibre produced from plastic pet bottles, available in size 1mX1.5m.

- **TECNO BLUE**
- **TECNO PLUS**

Standard Gauges: 0.9mm, 1.2mm & 1.4mm

SSC Solvent Dip is a superior quality sheet, made from non-woven recycled fibre produced from used plastic pet bottles, available in size 1mX1.5m.

- **TP SHEET SSC**
- **TP SHEET SSC-20**

Standard Gauges: 0.6mm, 0.9mm, 1.0mm, 1.2mm, 1.4mm & 1.8mm



LATEX FOAM

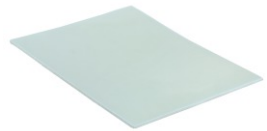
It's an eco-friendly product.

REGULAR D-20 (AQUA GREEN COLOUR, DARK GREEN COLOUR) is available the width of 36 inches.

Standard Gauges: 2.00mm, 3.00 mm & 4.00mm (in running yard)

REGULAR D-22 (DARK GREEN COLOUR) is available the width of 36 inches.

Standard Gauges: 3.00 mm (in running yard)



ARS GLOBAL PVT LTD
COMMITTED TO DESIGN, QUALITY & DELIVERY

COUNTER COOLER CUSHIONING

TONGUE CUSHIONING & LINING

INTEGRAL FULL SOCK

HALF & THREE QUATER SOCKS

REMOVABLE INSOLE

CUSHIONED HEEL SOCK

TOE CUSHION UNIT

COUNTER & COUNTER LINING

Our ARS latex foams are supplied wherever cushioning, comfort & protection are required in all types of footwear. i.e. Sports Shoes, Safety Boots, Casuals, Slippers, Fashion Shoes and Boots.

We offer a range of thicknesses 2mm 3mm & 4mm and densities 20 & 22

With the colour Dark Green & Aqua green



www.arsglobal.net

ARS GLOBAL Pvt. Ltd.

Committed to Design, Quality & Delivery

LEADING
FOOTWEAR COMPONENTS
SUPPLIER

Address:

ARS Global Pvt. Ltd.

Khasra No 100A -100B

Mauza Lakhanpur,

Agra-282007 U.P (INDIA)

Mobile: +91-8191900091, 9368701039

Enquiries: info@arsglobal.net

Service & Support: support@arsglobal.net

